

# TFB-1166 v2

INTELLIGENT ADDRESSABLE MANUAL CALL POINT WITH BUILT-IN ISOLATOR, RESETTABLE

Installation and User Manual

Release Date: 04/01/2021 Rev:03



## IMPORTANT WARNINGS

### GENERAL

- ✓ Read this manual carefully before operating the equipment and save it for future reference.
- ✓ Observe all warnings and precautions specified in the operating instructions. Follow all operating and usage instructions.
- ✓ Keep devices away from water and moisture.

### ENVIRONMENTAL CONDITIONS

Do not operate the device in extremely hot or cold environments except under the following conditions.

Temperature: Between -10°C ~ +70°C  
Humidity: ≤93% at +40°C

### SERVICE

Do not attempt to repair the appliance yourself, you may be exposed to electric shock if you open the appliance cover.

In the event of any malfunction, contact your dealer or authorized service. Technical intervention to the device must be performed by qualified service personnel.

### FAULT CONDITIONS REQUIRING SERVICE

In the event of any malfunction or in the following cases, contact your authorized service or dealer.

- ✓ When the power cord is damaged,
- ✓ When any liquid flows into the device or any object falls,
- ✓ When exposed to water or rain,
- ✓ If the device has been dropped or the housing has been damaged
- ✓ If the device has noticeable performance changes,
- ✓ If the device does not operate normally according to the operating instructions specified in the installation manual

### WHAT YOU CAN DO ON YOURSELF

Do not attempt to repair the appliance yourself, as you may be exposed to electric shock if you open the case. In the event of any malfunction, contact your dealer or authorized service. Technical intervention to the device must be carried out by qualified service personnel. The appliance should be cleaned with a dry cloth. Do not use any chemicals.

### SHIPMENT AND TRANSPORTATION

The device must be handled carefully so that it is not exposed to any external impact and does not allow any liquid to enter. Malfunctions during improper handling are not covered by the warranty.

### HUMAN AND ENVIRONMENTAL HEALTH

This device does not contain any chemical or biological substances that may harm human health..

**Warning: TFM-128x Sub-base isolator modules must be operated together with v2 version Addressable Panel, TFC-1201 Loop Board, TFM-128X Sub-Base Modules and TFM-1990 Isolator Module. Short circuit protection function does not work if used with previous versions!**

Make sure that the following label is on the products that will work with short circuit protection function.



1922

**Bilgi Elektronik San. ve Tic. A.Ş.**  
Dudullu OSB 1. Cad. İsmet Tarman İş Merkezi  
No:1 Kat:2 No:32 Ümraniye / İstanbul  
**17**  
**1922-CPR-0898**

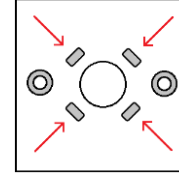
EN 54-11:2001, EN 54-11:2001/A1:2005  
Manual Alarm Devices

**TFB-1166**

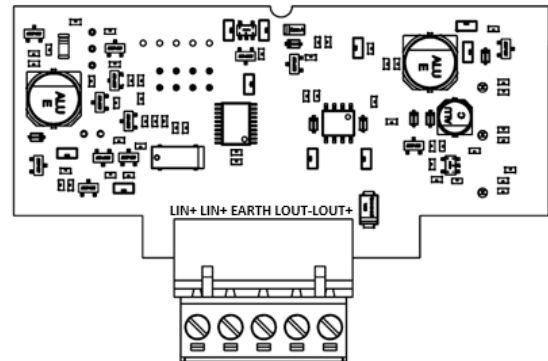
Technical Data: See BİLGİ-TEC-170907-2 maintained at the manufacturer

## INSTALLATION AND CONNECTION

1. Mount the button on the wall so that the fire cable passes through the base of the clip. Do not over-tighten the wall-mounting screws.



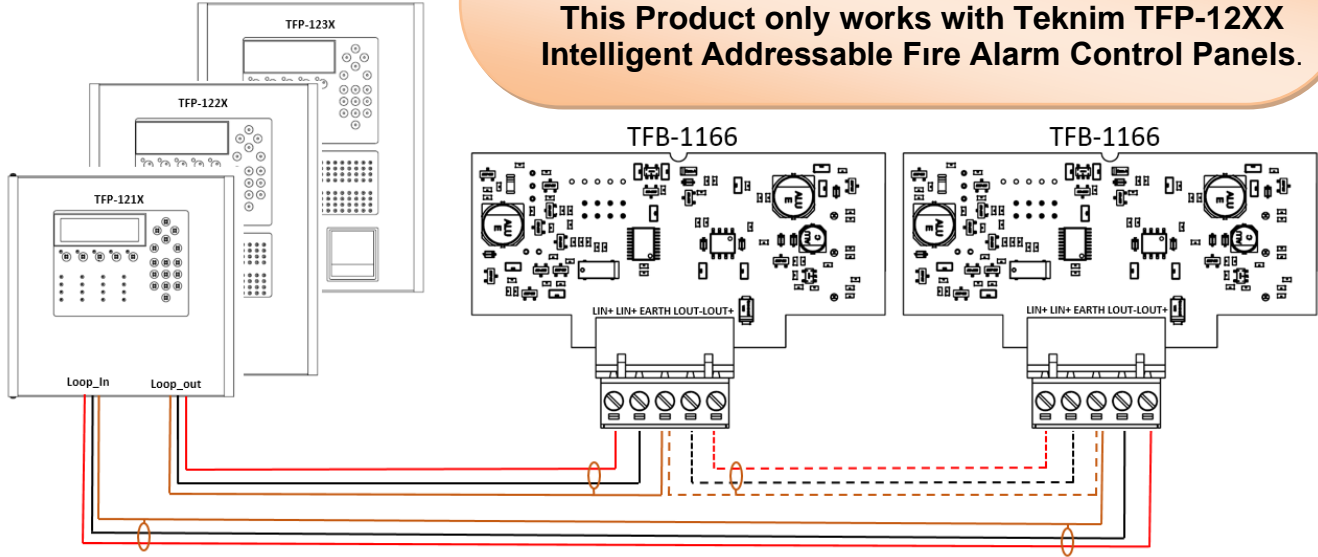
2. On the board there are LIN+, LIN-, EARTH, LOUT- and LOUT+ connectors. For the perfect operation please connect + from control panel loop exit to LIN+ and - from control panel loop exit to LIN-. And move to next device from LOUT- and LOUT+



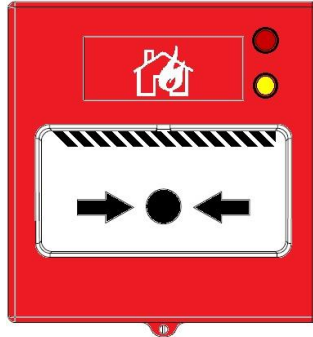
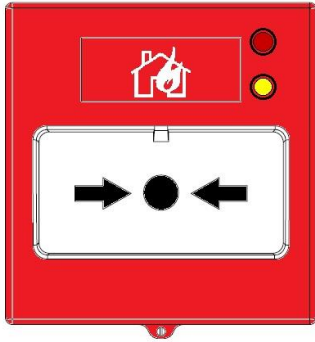
3. EARTH connection must be connected both on control panel and inside of manual call point to ensure integrity
4. After the TFB-1166 is connected to the panel and give address, the LED on it starts to blink with a blue light at intervals of 20 seconds. LED lights steady RED in case of alarm. If a short circuit occurs on the loop line, the YELLOW LED on the call point lights up continuously and the short circuit point is opened by two isolators to protect the loop line.

## IMPORTANT WARNING!

This Product only works with Teknim TFP-12XX Intelligent Addressable Fire Alarm Control Panels.

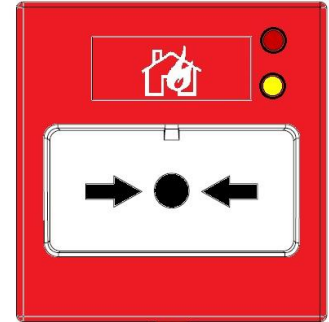


### TEST



1) Press the center point.

n  
ED  
D.



3) In the case of a fire alarm, press the button and observe that the panel is reset after resetting the button. In this case, the LED on it starts flashing Blue light at 20 seconds intervals.

### FEATURES

Model	Operating Voltage	Voltage	Average / Alarm Consumption	Cable Selection	Temperature and Humidity	Type of Frangible Element	Body Material, Dimensions, Weight
TFB- 1166	24 VDC	15-32 VDC	100uA. / 4,5mA.	0,8mm ~ 2.0mm	-10 ~ +70 ≤93% @ +40°C	A, Indoor Usage (Surface + Under Surface Mounted)	RED ABS 86x55x88mm 145 gr

### MANUFACTURER

#### Bilgi Elektronik San. ve Tic. A.Ş.

Dudullu Organize Sanayi Bölgesi 1. Cadde İsmet Tarman İş Merkezi  
No:1 Kat:2 No:32 Ümraniye / İstanbul

Phone: +90 216 455 88 46 Fax: +90 216 455 99 06

[www.bilgielektronik.com.tr](http://www.bilgielektronik.com.tr)

[sales@bilgielektronik.com.tr](mailto:sales@bilgielektronik.com.tr)

[www.teknim.com](http://www.teknim.com)



\*Complies with WEEE regulations. This product is made of high-quality parts and materials which are recyclable and reusable. Therefore, do not dispose of the product with household or other waste at the end of its service life. Take it to a collection point for the recycling of electrical and electronic equipment.