

# MILESIGHT H.265+ PRO DOME NETWORK CAMERA

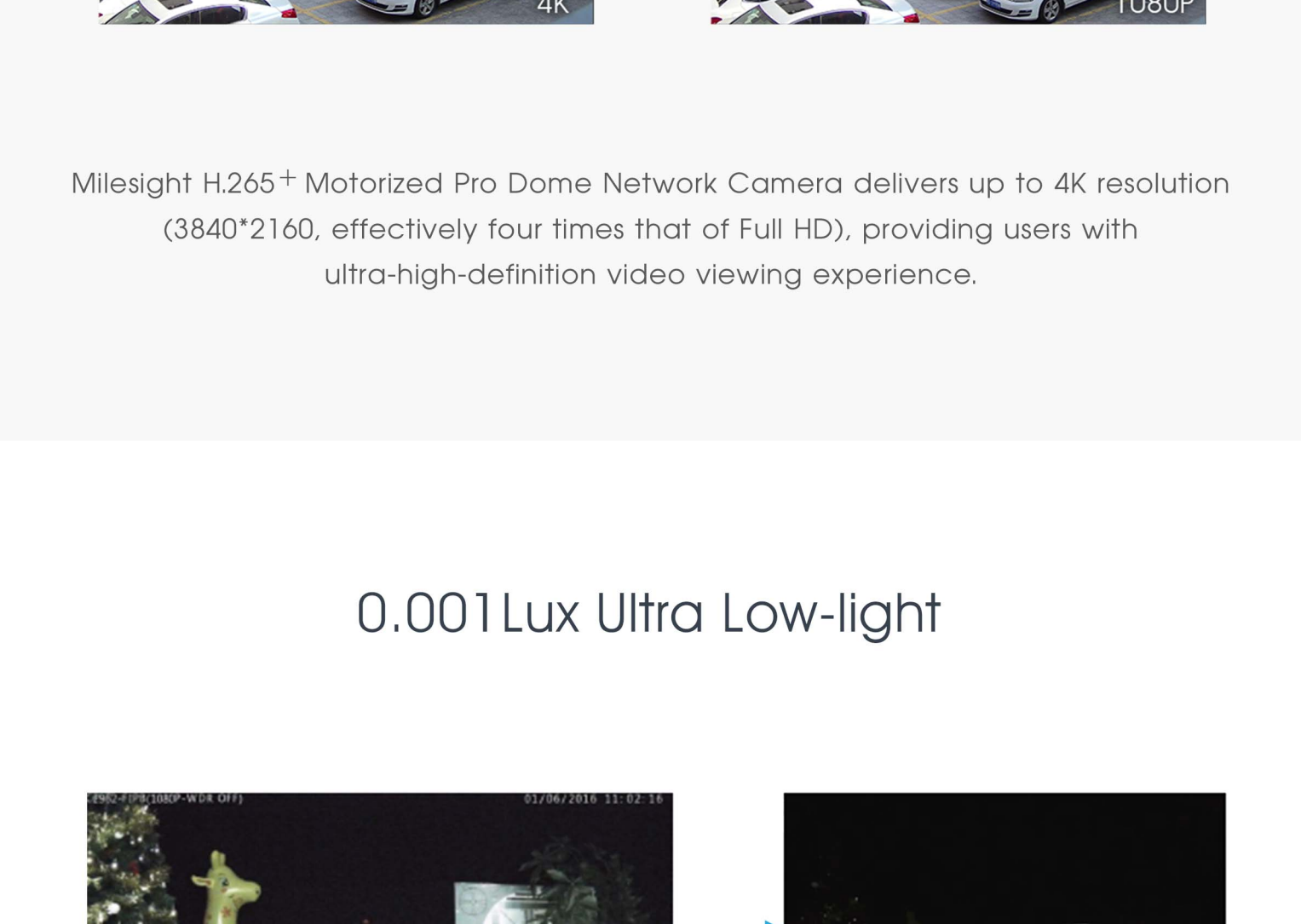
Milesight's Pro Dome Network Camera is the most robust weather-proof and vandal-proof solution with motorized zoom lens, outshining all the others in hardware innovations for hassle-free installation and maintenance.

IP67&IK10

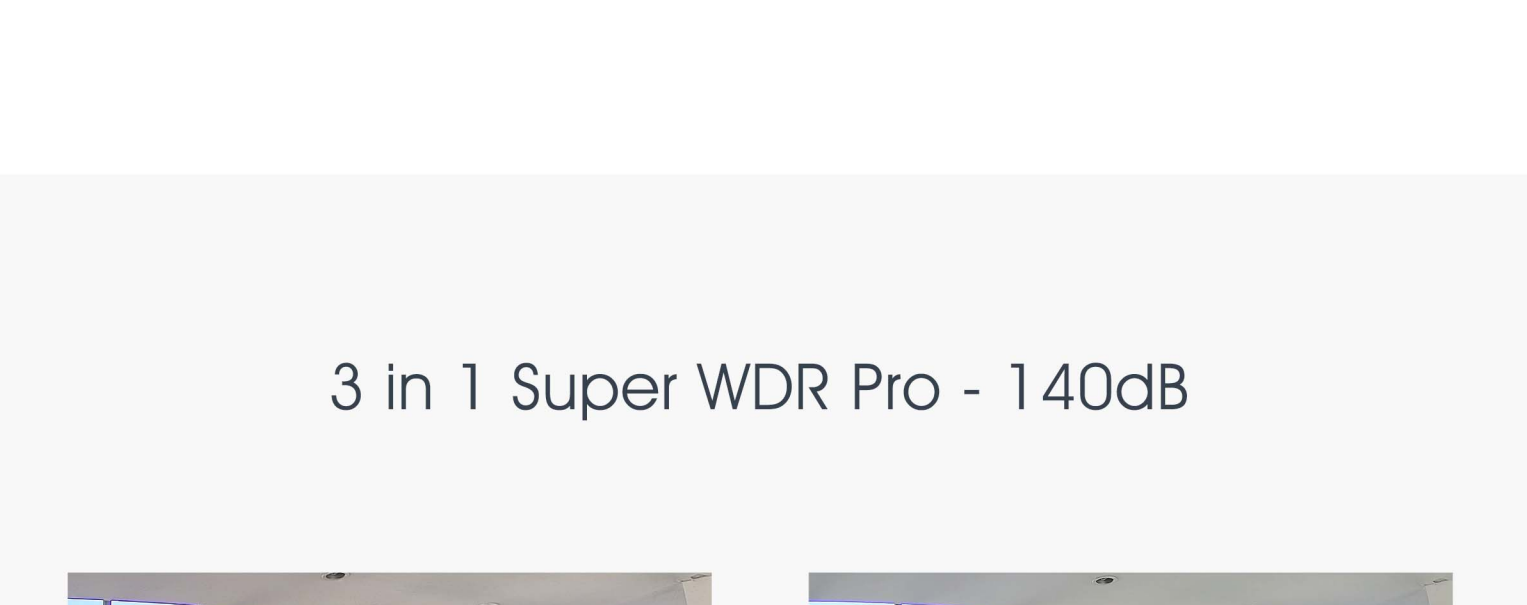
## Leading-edge H.265+ Compression



## Video Content Analysis



## 4K Video Viewing Experience



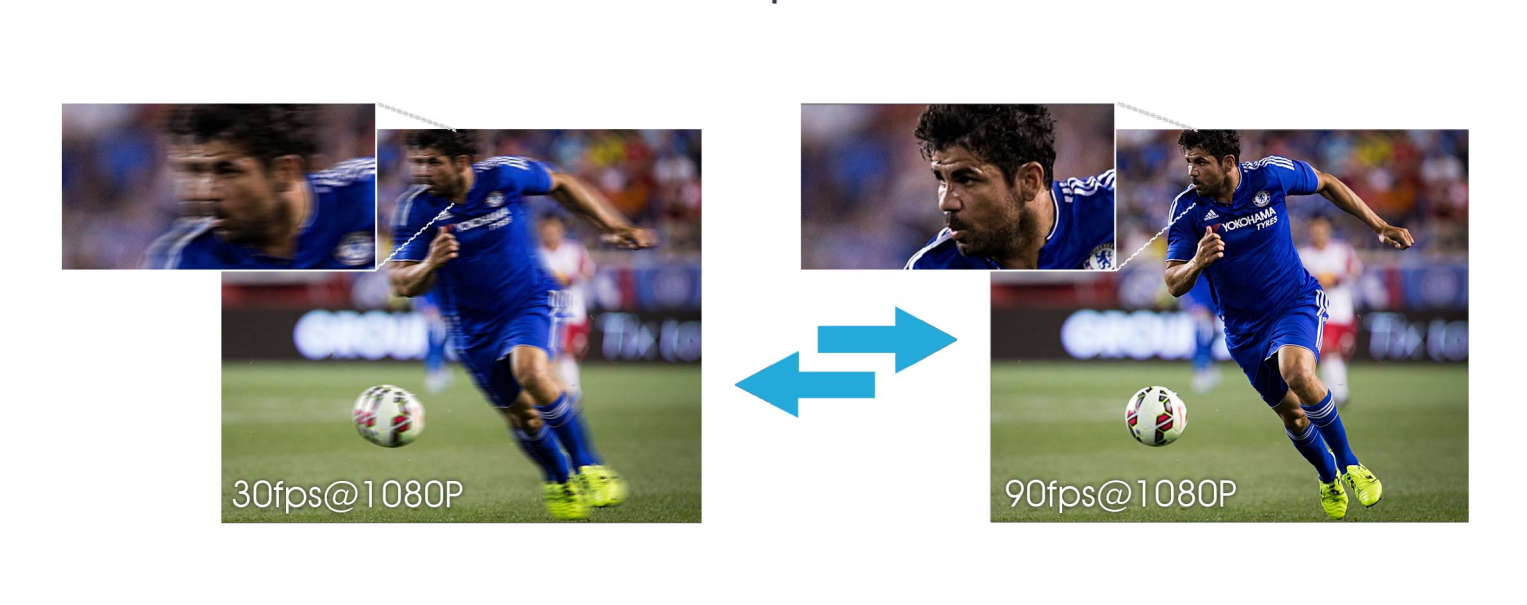
Milesight H.265+ Motorized Pro Dome Network Camera delivers up to 4K resolution (3840\*2160, effectively four times that of Full HD), providing users with ultra-high-definition video viewing experience.

## 0.001 Lux Ultra Low-light



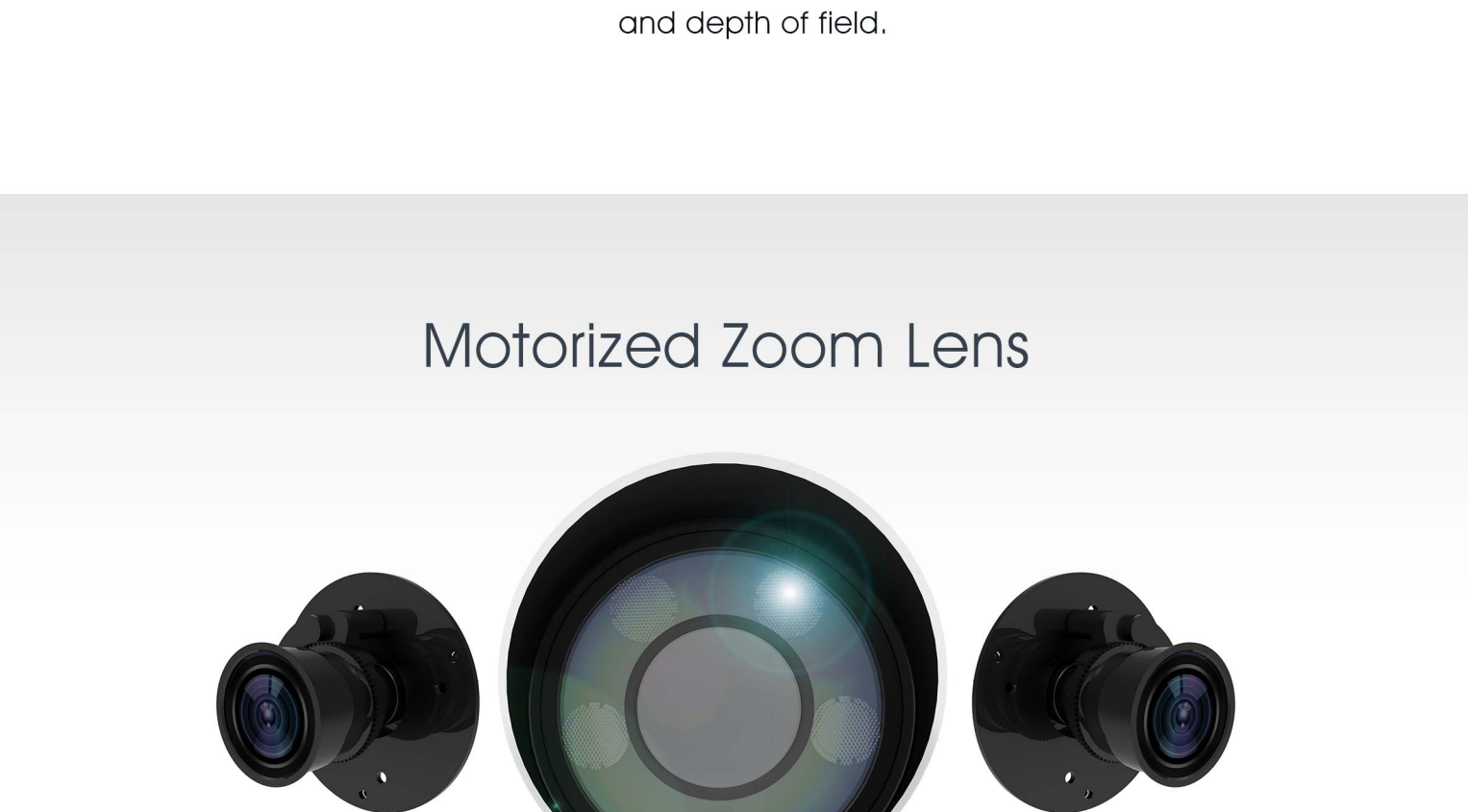
The starlight camera is able to deliver high detailed color images even in the low light environments reaching 0.001Lux (Color) or 0Lux (B/W), and near infrared light environments without any supplementary lighting.

## 3 in 1 Super WDR Pro - 140dB



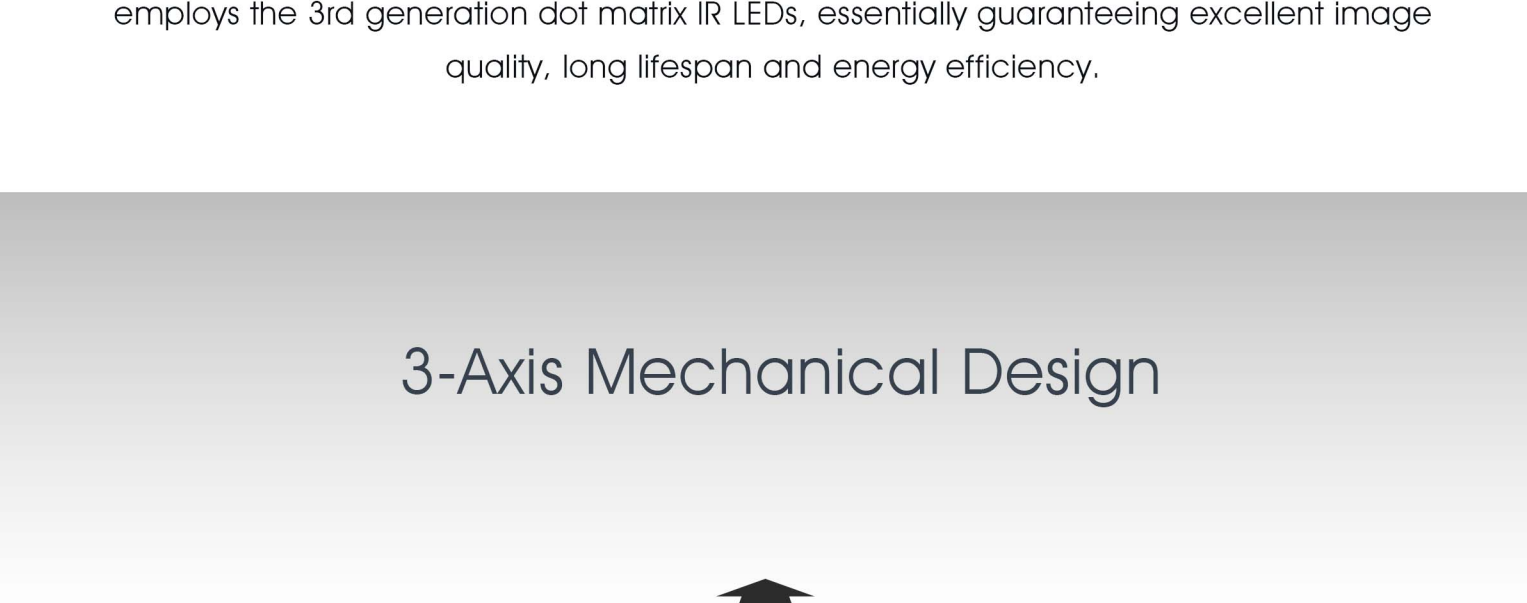
Milesight upgraded 3 in 1 Super WDR Pro outputs three frames each line, which is able to bring more details especially moving subjects. What's more, it greatly improves image quality for reducing smear and noisy points. The ratio that the brightest light signal values divided by the darkest light signal values is up to 140dB.

## Smart IR II Technology



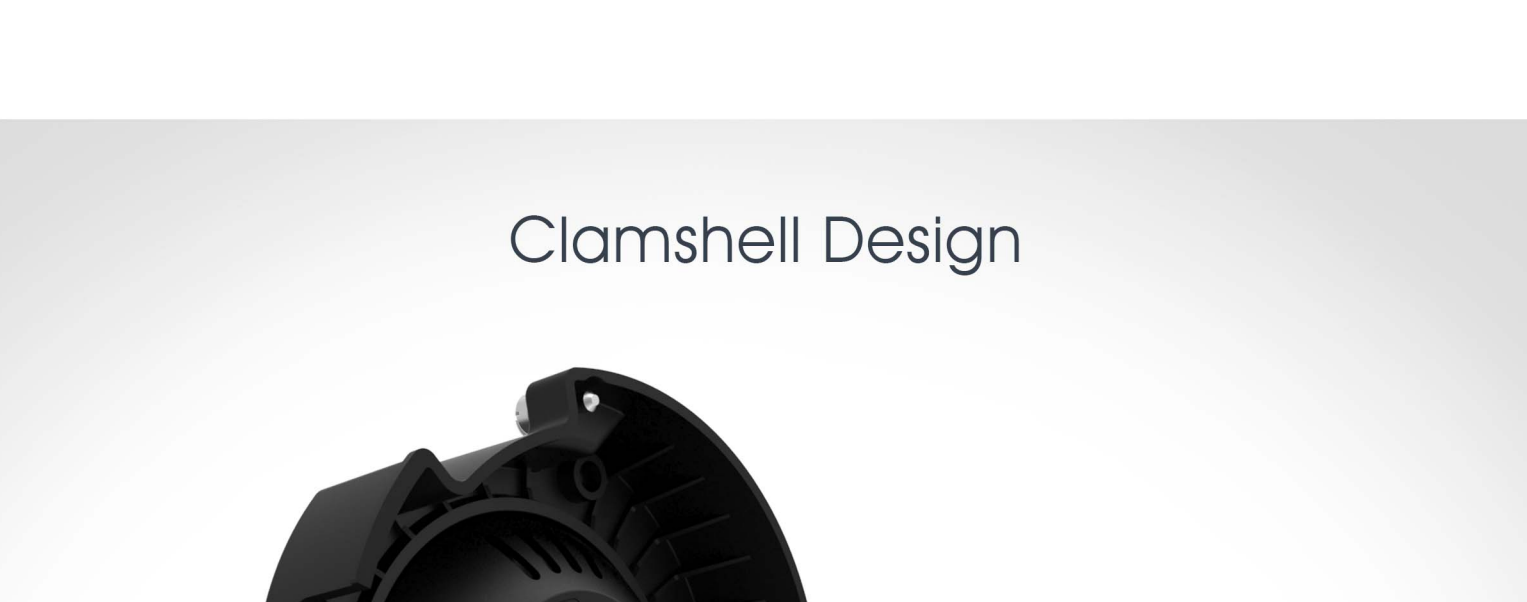
The IR LEDs technology has been upgraded to provide videos with a viewing range of up to 50m(80m). One LED on the top work as High Beam, while the other two on the bottom as Low Beam for better image clarity and quality regardless of the object distance. Also, the Low Beam and High Beam's brightness can be adjusted manually or automatically on the basis of the zoom ratio.

## 90fps



The high frame rate up to 90fps@1080P resolution, which triples the number of frames offered by conventional HD network cameras. It enables Milesight cameras to capture real-time and low-latency images of fast moving objects clearly.

## P-Iris Control



Adopting P-Iris control technology, the pro dome camera is able to optimize the iris opening under all lighting conditions, offering images better contrast, clarity, resolution and depth of field.

## Motorized Zoom Lens



## 3rd Generation Dot Matrix IR LEDs



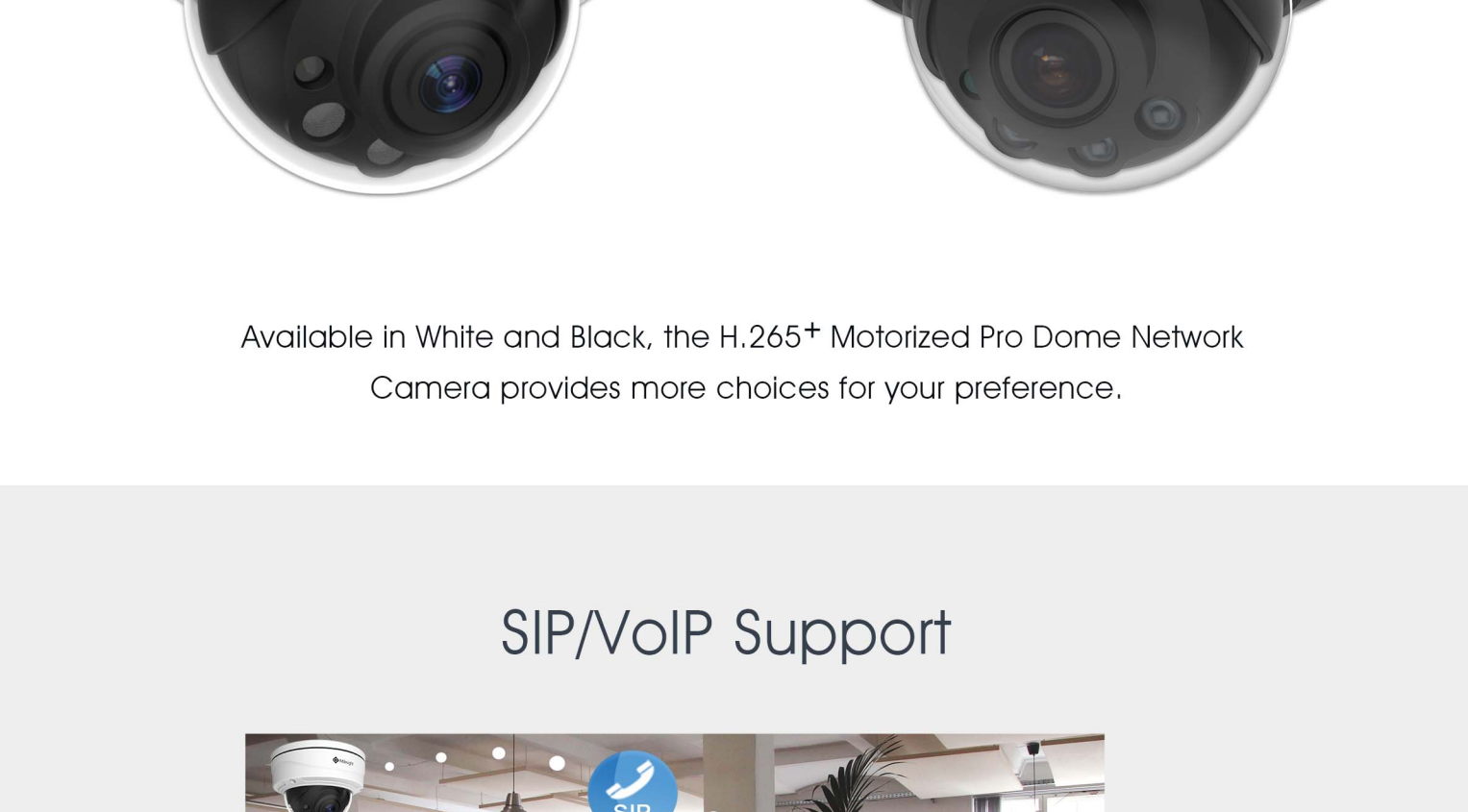
In order to provide superior night visibility, the H.265+ Motorized Pro Dome Network Camera employs the 3rd generation dot matrix IR LEDs, essentially guaranteeing excellent image quality, long lifespan and energy efficiency.

## 3-Axis Mechanical Design



The Motorized Pro Dome Network Camera features 3-axis mechanical design for fast and easy adjustment of the camera's viewing angle, allowing you to precisely position the camera.

## Clamshell Design



Aiming to reduce the installation troubles to the least, Milesight creatively introduces the clamshell design to the dome base. This revolutionary innovation enlarges the space to make cable connection a piece of cake, greatly saving efforts for installers.

## Smoked Dome Cover



Milesight H.265+ Motorized Pro Dome Network Camera supports Smoked Dome Cover which is able to hide the direction of the camera for not letting people see where the camera is pointed.

## Integrated Cable Management



In the base support, there is power interface, POE port, and other interfaces. Thanks to integrated cable management, it takes no effort in installation.

## Mounting Bracket



For installers, holding the camera body to secure the screws into the wall is a fatiguesome job. Being customer-oriented, Milesight optimized the hardware structure to avoid that with a light thin mounting bracket. Installers could firstly secure the mounting bracket in the desired location and then insert the camera body, thus no unnecessary energy is wasted.

## Two Colors Available



## SIP/VoIP Support



Milesight H.265+ Motorized Pro Dome Network Camera features industry leading SIP/VoIP function and video streaming for mobile phones and video phones.