

BioLite N2

Outdoor IP Fingerprint Terminal



Suprema BioLite N2 is a Suprema's 2nd generation outdoor fingerprint terminal that provides comprehensive access control and time attendance features based on Suprema's latest biometric technology and security platform. BioLite N2 provides class-leading performance and security by featuring Suprema's latest fingerprint algorithm coupled with world's best fingerprint sensor. Packed in a rugged IP67 housing, BioLite N2 added flexibility in system design with multi-class RFID reading technology.

BioLite N2

Outdoor IP Fingerprint Terminal

Features



Best-in-class Performance

- Latest Suprema fingerprint algorithm
- Powerful 1.2 GHz CPU



Multi RFID Card Reading

- LF(125kHz), HF(13.56MHz) dual band
- Reads all card types including Mobile Card (NFC and BLE)



Advanced Accuracy & Security

- High-precision OP6 optical sensor



IP67 Certified Dust & Water Protection

- Ideal for harsh environment and outdoor installation



Full Time Attendance Features

- Color LCD with Keypad for time attendance functionality



FBI PIV(FAP 10) certified (BLN2-PAB Sensor only)

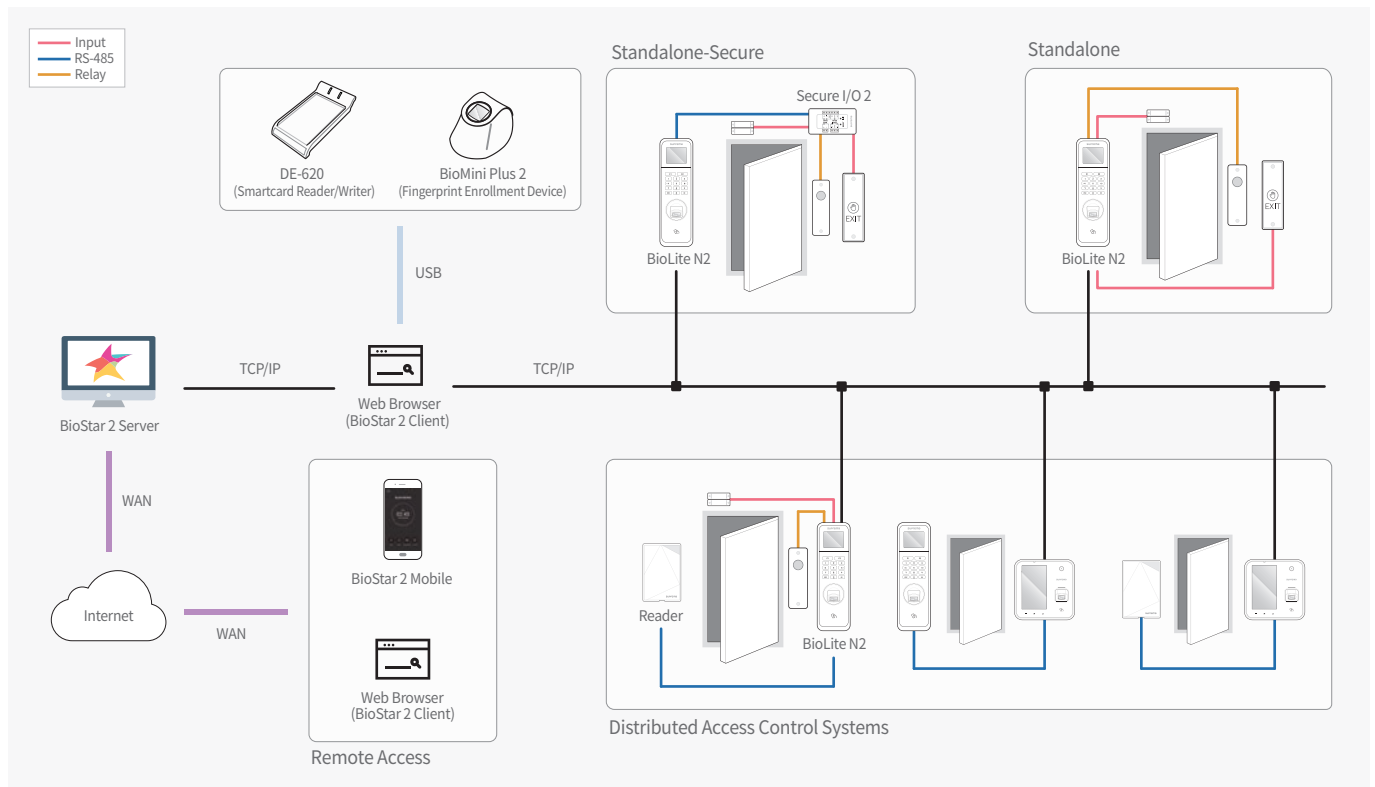
- OEM SFU-550 (SFU-P2) & fingerprint sensing module OPV single finger livescan capture device without membrane at 500ppi (PIV-071006 and Mobile ID FAP 10)

Specifications

| Biometric | | | | | |
|--|---|----------|--------------------|--|--|
| Sensor Type | Fingerprint | | | | |
| Template | Optical Sensor (OP6) | | | | |
| Extractor / Matcher | SUPREMA / ISO 19794-2 / ANSI 378 | | | | |
| RF Option | MINEX certified and compliant | | | | |
| | <table border="1"> <thead> <tr> <th>BLN2-ODB</th><th>BLN2-OAB, BLN2-PAB</th></tr> </thead> <tbody> <tr> <td>125kHz EM & 13.56MHz MIFARE, MIFARE Plus, DESFire/EV1 & 2.4GHz BLE, FeliCa</td><td>125kHz EM, HID Prox & 13.56MHz MIFARE, MIFARE Plus, DESFire/EV1, FeliCa, iCLASS SE/SR/Seos, NFC & 2.4GHz BLE</td></tr> </tbody> </table> | BLN2-ODB | BLN2-OAB, BLN2-PAB | 125kHz EM & 13.56MHz MIFARE, MIFARE Plus, DESFire/EV1 & 2.4GHz BLE, FeliCa | 125kHz EM, HID Prox & 13.56MHz MIFARE, MIFARE Plus, DESFire/EV1, FeliCa, iCLASS SE/SR/Seos, NFC & 2.4GHz BLE |
| BLN2-ODB | BLN2-OAB, BLN2-PAB | | | | |
| 125kHz EM & 13.56MHz MIFARE, MIFARE Plus, DESFire/EV1 & 2.4GHz BLE, FeliCa | 125kHz EM, HID Prox & 13.56MHz MIFARE, MIFARE Plus, DESFire/EV1, FeliCa, iCLASS SE/SR/Seos, NFC & 2.4GHz BLE | | | | |
| CPU | 1.2 GHz | | | | |
| Memory | 4GB Flash + 64MB RAM | | | | |
| Max. User | 10,000 | | | | |
| Max. Template | 20,000* | | | | |
| Max. Logs | 1,000,000 | | | | |
| LCD | 1.77" color LCD | | | | |
| Sound | 16-bit Hi-Fi | | | | |
| Ethernet | 10/100 Mbps, auto MDI/MDI-X | | | | |
| RS-485 | 1ch Host or Slave (Selectable) | | | | |
| Wiegand | 1ch Input or Output (Selectable) | | | | |
| TTL | 2ch Input | | | | |
| Relay | 1 Relay | | | | |
| Ingress Protection | IP67 | | | | |
| Tamper | Supported | | | | |
| Power | DC 12V | | | | |
| Operating Temperature | -20°C ~ 50°C, (BLN2-PAB: -10°C ~ 50°C) | | | | |
| Operating Humidity | 0% ~ 80%, non-condensing | | | | |
| Dimensions (WxHxD,mm) | 58 x 190 x 44 | | | | |
| Certificates | CE, FCC, KC, RoHS, REACH, WEEE, FBI PIV(BLN2-PAB Sensor only) | | | | |

* Two templates per finger

System Configurations



suprema
BIOMETRICS & SECURITY

Suprema Inc.

17F Parkview Tower, 248, Jeongjail-ro, Bundang-gu, Seongnam-si, Gyeonggi-do, 13554, Rep. of KOREA
T: +82 31 783 4502 F: +82 31 783 4503 E: sales_sys@supremainc.com www.supremainc.com

©2018 Suprema Inc. Suprema and identifying product names and numbers herein are registered trade marks of Suprema, Inc. All non-Suprema brands and product names are trademarks or registered trademarks of their respective companies. Product appearance, build status and/or specifications are subject to change without notice. [AHL-BLN2-181030-07-EN]