

OS-I2-BENS2M-ALST | 2MP WDR IR Bullet Network Camera



- 1/2.8" 2Megapixel progressive Starvis™ CMOS
- H.265 & H.264 dual-stream encoding
- 25/30fps@1080P(1920×1080)
- Smart Detection supported
- WDR(120dB), Day/Night(ICR), 3DNR, AWB, AGC, BLC
- Multiple network monitoring: Web viewer, CMS(DSS/PSS) & DMSS
- 2.7mm ~13.5mm motorized lens
- 2/1 Alarm in/out, 1/1 audio in/out
- Max. IR LEDs Length 60m
- Micro SD memory, IP67, PoE



System Overview

Bringing high efficient video compression. It saves bandwidth and storage, energy-saving design to enhance the monitoring system. Meanwhile, the series offers features such as starlight, Smart IR technology, intelligent image analysis techniques. It provides excellent image quality and intelligent and efficient event reminders. This series provides IP67 weatherproof and IK10 vandal-proof protection feature. Give customers more value.

Functions

Smart H.265+

Smart H.265+ is the optimized implementation of the H.265 codec that uses a scene-adaptive encoding strategy, dynamic GOP, dynamic ROI, flexible multi-frame reference structure and intelligent noise reduction to deliver high-quality video without straining the network. Smart H.265+ technology reduces bit rate and storage requirements by up to 70% when compared to standard H.265 video compression.

Starlight Technology

Featuring Osiris' Starlight Technology, this camera is ideal for applications with challenging lighting conditions. Its low-light performance delivers usable video with minimal ambient light. Even in extreme low-light conditions, Starlight Technology is capable of delivering color images in near complete darkness (0.006 lux).

Wide Dynamic Range

Embedded with industry leading wide dynamic range (WDR) technology, vivid pictures are achieved even in the most intense contrast lighting conditions. For applications with both bright and low lighting conditions that change quickly, True WDR (120dB) optimizes both the bright and dark areas of a scene at the same time to provide usable video.

Intelligent Video System (IVS)

With built-in intelligent video analytics, the camera has the ability to detect and analyze moving objects for improved video surveillance. The camera provides optional standard intelligence at the edge allowing detection of multiple object behaviors such as abandoned or missing objects. IVS also supports Tripwire analytics, allowing the camera to detect when a pre-determined line has been crossed, ideal for business

intelligence, and Facial Detection, for searching or identification of individuals.

Protection

Supporting ±30% input voltage tolerance, this camera suits even the most unstable conditions for outdoor applications. Its 4KV lightning rating provides protection against the camera and its structure from the effects of lightning.

Environmental

Osiris cameras operate in extreme temperature environments, rated for use in temperatures from -30° C to +60° C (-22° F to +140° F) with 95% humidity.

Interoperability

The camera conforms to the ONVIF (Open Network Video Interface Forum) specifications, ensuring interoperability between network video products regardless of manufacturer.

OS-I2-BENS2M-ALST | 2MP WDR IR Bullet Network Camera

Technical Specifications

Camera						Frame Rate	1080P (1 ~ 25/30fps) D1/CIF(1 ~ 25/30fps)
Image Sensor		1/2.8" 2Megapixel progressive CMOS				Bit Rate Control	CBR/VBR
Effective Pixels		1920(H) x1080(V)				Bit Rate	H.265: 12K ~ 6400Kbps H.264: 32K ~ 10240Kbps
RAM/ROM		256MB/32MB				Day/Night	Auto(ICR) / Color / B/W
Scanning System		Progressive				BLC Mode	BLC / HLC / WDR(120dB)
Electronic Shutter Speed		Auto/Manual, 1/3~1/100000s				White Balance	Auto/Natural/Street Lamp/Outdoor/ Manual
Illumination		0.006Lux/F1.4(Color,1/3s,30IRE) 0.05Lux/F1.4(Color,1/30s,30IRE) 0Lux/F1.4(IR on)				Gain Control	Auto/Manual
S/N Ratio		More than 50dB				Noise Reduction	3D DNR
IR Distance		Distance up to 60m (197ft)				Motion Detection	Off / On (4 Zone, Rectangle)
IR On/Off Control		Auto / Manual				Region of Interest	Off / On (4 Zone)
IR LEDs		4				Electronic Image Stabilization (EIS)	N/A
Lens						Smart IR	Support
Lens Type		Electronic				Digital Zoom	16x
Mount Type		Board-in				Flip	0°/90°/180°/270°
Focal Length		2.7mm~13.5mm				Mirror	Off / On
Max. Aperture		F1.4				Privacy Masking	Off / On (4 Area, Rectangle)
Angle of View		H:106°~29°, V:57°~17°				Audio	
Focus Control		Fixed				Compression	N/A
Close Focus Distance		0.3m				Network	
DORI Distance	Lens	Detect	Observe	Recognize	Identify	Ethernet	RJ-45 (10/100Base-T)
	W	46m	18m	9m	5m	Protocol	HTTP;HTTPS;TCP;ARP;RTSP;RTP;RTCP;UDP;SMTP; FTP;DHCP;DNS;DDNS; PPPoE;IPv4/v6;QoS;UPnP; NTP;Bonjour;IEEE 802.1x;Multicast; ICMP;IG-MP;TLS
	T	153m	61m	30m	15m	Interoperability	ONVIF Profile S&G, API
PTZ						Streaming Method	Unicast / Multicast
Pan/Tilt Range		Pan:0°~355° Tilt:0°~75° Rotation:0°~355°				Max. User Access	10 Users /20 Users
Intelligence						Edge Storage	NAS / Local PC for instant recording Micro SD Card 128GB
IVS		Tripwire, Intrusion				Web Viewer	IE, Chrome, Firefox, Safari
Video						Management Software	Smart PSS, DSS, DMSS
Compression		H.265+/H.265/H.264+/H.264				Smart Phone	IOS, Android
Streaming Capability		2 Streams					
Resolution		1080P(1920×1080)/SXGA(1280×1024)/1.3M(1280×960)/720P(1280×720)/ D1(704×576/704×480)/ VGA(640×480) CIF(352×288/352×240)					

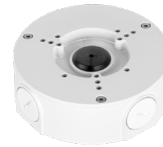
OS-I2-BENS2M-ALST | 2MP WDR IR Bullet Network Camera

Technical Specifications (2)

Certifications	
Certifications	CE (EN 60950:2000) UL:UL60950-1 FCC: FCC Part 15 Subpart B
Interface	
Video Interface	N/A
Audio Interface	N/A
RS485	N/A
Alarm	N/A
Electrical	
Power Supply	DC12V, PoE (802.3af)(Class 0)
Power Consumption	<12.6W
Environmental	
Operating Conditions	-30° C ~ +60° C (-22° F ~ +140° F) / Less than 95% RH
Storage Conditions	-30° C ~ +60° C (-22° F ~ +140° F) / Less than 95% RH
Ingress Protection	IP67
Vandal Resistance	N/A
Construction	
Casing	Metal
Dimensions	Φ244.1mm×79.0mm×75.9mm
Net Weight	0.815kg (1.80lb)
Gross Weight	1.08kg (2.38lb)

Accessories (optional)

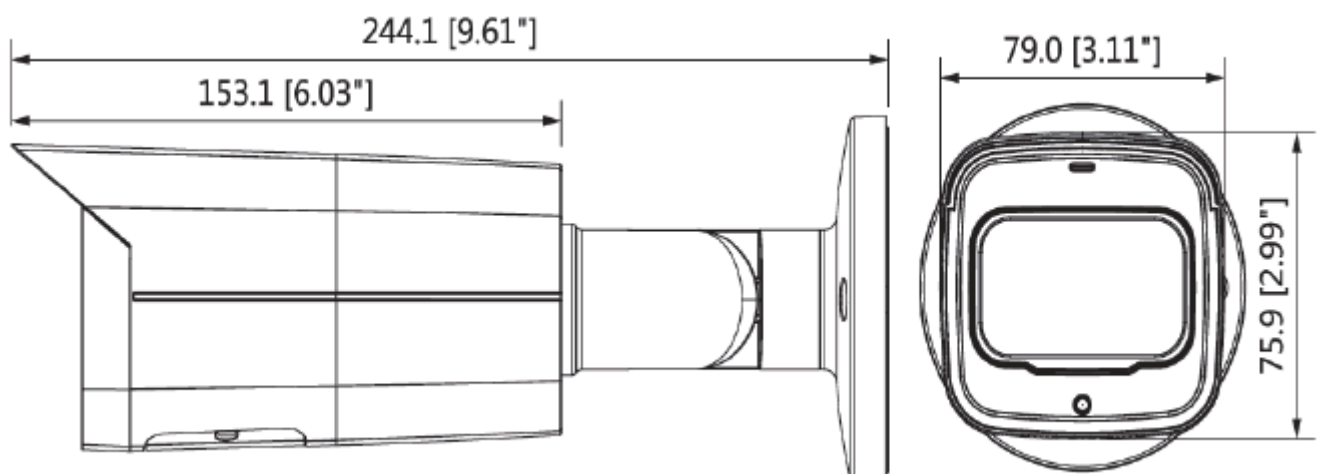
Junction Box:
PFA137



Pole Mount:
PFA152-E



Dimensions (mm/inch)



* The information contained in this document (photos, drawings, dimensions, specifications) may be subject to change without prior notice.

** Copyright© Osiris Security. All rights reserved. The information in this document can not be published, rewritten or republished in any form. If you wish to use the text or images in this document for commercial reasons, please contact marketing@osiris-security.com