

## OS-H1-SE2F-0280 | 2MP HDCVI Bullet Camera



- Max 30fps@1080P
- HD and SD output switchable
- 2.8mm fixed lens (3.6mm optional)
- IP67, DC12V



### System Overview

Experience 1080P full HD video and the simplicity of using existing cabling infrastructure with HDCVI. The Lite series micro-sized bullet features a micro design and high quality image at a friendly price. The compact design minimizes its impact on operations and creates friendly environments. It offers various fixed lens models with a multi-language OSD and HD/SD switchable output. Its structural flexibility and high cost-performance makes the camera an ideal choice for concealed monitoring solutions.

### Functions

#### 4 Signals over 1 Coaxial Cable

HDCVI technology supports 4 signals to be transmitted over 1 coaxial cable simultaneously, i.e. video, audio\*, data and power. Dual-way data transmission allows the HDCVI camera to interact with the HCVR, such as sending control signal or triggering alarm. Moreover, HDCVI technology supports PoC for construction flexibility.

\* Audio input is available for some models of HDCVI cameras.

#### Long Distance Transmission

HDCVI technology guarantees real-time transmission at long distance without any loss. It supports up to 800m(1080P)/1200m(720P) transmission via coaxial cable, and up to 300m(1080P)/450m(720P) via UTP cable.\*

\*Actual results verified by real-scene testing in Osiris's test laboratory.

#### Simplicity

HDCVI technology inherits the born feature of simplicity from traditional analog surveillance system, making itself a best choice for investment protection. HDCVI system can seamlessly upgrade the traditional analog system without replacing existing coaxial cabling. The plug and play approach enables full HD video surveillance without the hassle of configuring a network.

#### Multi-formats

The camera supports multiple video formats including HDCVI, CVBS and other two common HD analog formats in the market. The four formats can be switched over through OSD menu or by PFM820(UTC controller). This feature makes the camera to be compatible with not only HCVRs but also most end users' existing HD/SD DVRs.

#### Multi-language OSD

OSD menu provides multiple image adjustments and function settings to meet the requirements of different monitoring scenes. The OSD menu includes configurations such as backlight mode, day/night, white balance, privacy mask and motion detect. The camera supports 11 languages for OSD menu, namely, Chinese, English, French, German, Spanish, Portuguese, Italian, Japanese, Korean, Russian and Polish.

#### Protection

The camera's outstanding reliability is unsurpassed due to its rugged design. The camera is protected against water and dust with IP67 ranking, making it suitable for indoor or outdoor environments.

With working temperature range of -40 °C to +60 °C (-40 °F to +140 °F), the camera is designed for extreme temperature environments.

Supporting  $\pm 25\%$  input voltage tolerance, this camera suits even the most unstable power supply conditions. Its 4KV lightning rating provides protection against the camera and its structure from the effects of lightning.

#### Elaborate Design

For better adapting invisible monitoring applications, the camera adopts micro-sized compact design, which minimizes the interference against on-going activities. Taking aesthetics requirements into consideration, the camera is all-black.

## OS-H1-SE2F-0280 | 2MP HDCVI Bullet Camera








### Technical Specifications

Camera		
Image Sensor	1/2.9" CMOS	
Effective Pixels	1920(H)×1080(V), 2MP	
Scanning System	Progressive	
Electronic Shutter Speed	PAL: 1/25~1/100000s NTSC: 1/30~1/100000s	
Minimum Illumination	0.02Lux/F2.0 (Color), 0.002Lux/F2.0 (B/W)	
S/N Ratio	More than 65dB	
IR Distance	N/A	
IR On/Off Control	N/A	
IR LEDs	N/A	
Lens		
Lens Type	Fixed lens / Fixed iris	
Mount Type	Board-in	
Focal Length	2.8mm (3.6mm Optional)	
Max. Aperture	F2.0	
Angle of View	H: 109.4° (92°)	
Focus Control	N/A	
Close Focus Distance	500mm (800mm) 19.69" (31.50")	
Dori Distance		
*Note: The DORI distance is a "general proximity" of distance which makes it easy to pinpoint the right camera for your needs. The DORI distance is calculated based on sensor specification and lab test result according to EN 62676-4 which defines the criteria for Detect, Observe, Recognize and Identify respectively.		
	DORI Definition	Distance
Detect	25px/m (8px/ft)	2.8mm: 40m(131ft) 3.6mm: 51m(169ft)
Observe	63px/m (19px/ft)	2.8mm: 16m(52ft) 3.6mm: 21m(68ft)
Recognize	125px/m (38px/ft)	2.8mm: 8m(28ft) 3.6mm: 10m(34ft)
Identify	250ppm (76px/ft)	2.8mm: 4m(13ft) 3.6mm: 5m(17ft)
Pan / Tilt / Rotation		
Pan/Tilt Range	Pan: 0° ~ 360° Tilt: 0° ~ 90° Rotation: 0° ~ 360°	

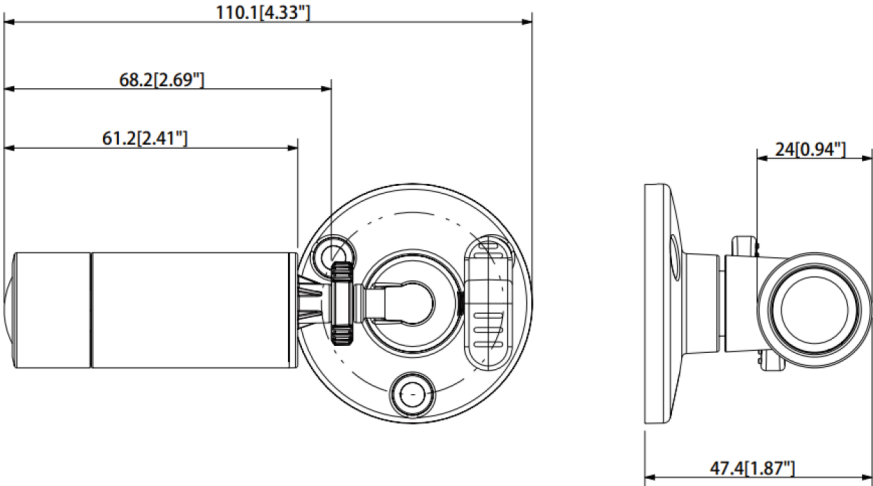
Video	
Resolution	1080P (1920×1080)
Frame Rate	25/30fps@1080P, 25/30/50/60fps@720P
Video Output	1-channel BNC high definition video output / CVBS video output (Can switch)
Day/Night	Auto (Electronic) / Manual
BLC Mode	BLC / HLC / DWDR
OSD Menu	Multi-language
Gain Control	AGC
Noise Reduction	2D
WDR	DWDR
White Balance	Auto / Manual
Smart IR	N/A
Certifications	
Certifications	CE (EN55032, EN55024, EN50130-4) FCC (CFR 47 FCC Part 15 subpartB, ANSI C63.4-2014)
Interface	
Audio Interface	N/A
Electrical	
Power Supply	12V DC ±25%
Power Consumption	Max 0.6W (12V DC, IR on)
Environmental	
Operating Conditions	-40°C ~ +60°C (-40°F ~ +140°F) / Less than 95% RH * Start up should be done at above -40°C (-40°F)
Storage Conditions	-40°C ~ +60°C (-40°F ~ +140°F) / Less than 95% RH
Ingress Protection & Vandal Resistance	IP67
Construction	
Casing	Aluminium
Dimensions	110.1mm×50mm×47.4mm (4.33"×1.97"×1.87")
Net Weight	0.10kg (0.22lb)
Gross Weight	0.15kg (0.33lb)

OS-H1-SE2F-0280 | 2MP HDCVI Bullet Camera

Accessories (optional)

<p>UTC Controller PFM820</p> 	<p>Passive HDCVI Balun PFM800-4K</p> 	<p>Passive Video Balun PFM800-E</p> 
<p>Passive Video Balun PFM800B-4K</p> 	<p>12V 1A Power Adapter PFM321</p> 	<p>12V 1.5A Power Adapter PFM320D-015</p> 
<p>12V 2A Power Adapter PFM300</p> 		

Dimensions (mm/inch)



\* The information contained in this document (photos, drawings, dimensions, specifications) may be subject to change without prior notice.  
\*\* Copyright© Osiris Security. All rights reserved. The information in this document can not be published, rewritten or republished in any form. If you wish to use the text or images in this document for commercial reasons, please contact marketing@osiris-security.com